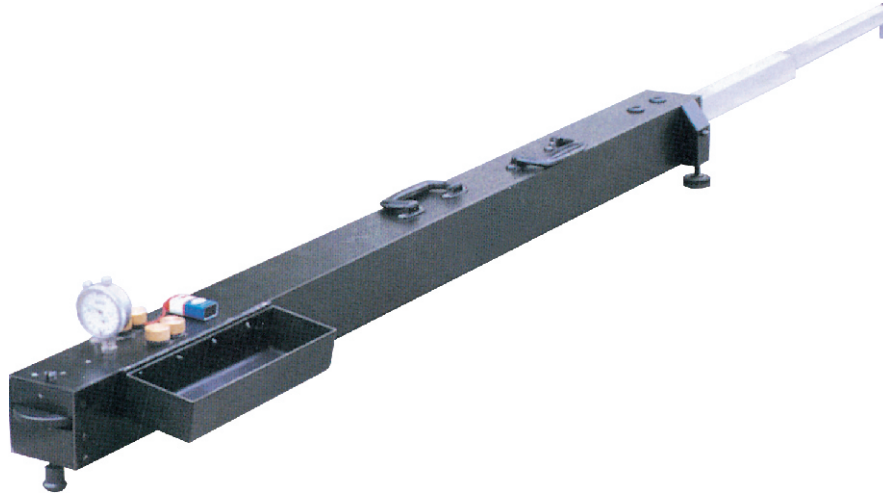


Benkelman Beam

ZI P-129



Benkelman Beam : ZI P-129

AASHTO T 256

Lightweight Aluminium construction

Ease of Transportation

Unique Telescopic Design Simplifying Field set up

Compact, Thereby reducing the amount of storage space needed

Benkelman Beam utilizes the technique of using balanced beam in conjunction with a suitable vehicle to measure road flexure. The improved Benkelman Beam is a convenient, accurate device for measuring the deflection of flexible pavements under moving wheel loads. Operating on a simple lever arm principle, the unit consists. Supplied with carrying case.

NOTE

Benkelman Beam with Digital Dial Gauge also available at an extra cost

ZEAL INTERNATIONAL

1, Netaji Subhash Marg, Darya Ganj, New Delhi-110 002 INDIA
Ph.:+91-11-23276114, 23244474, 23277528, 23278846, Fax :+91-11-23273214, 43580558
E-mail : sales@zealinternational.com ,website : zealinternational.com